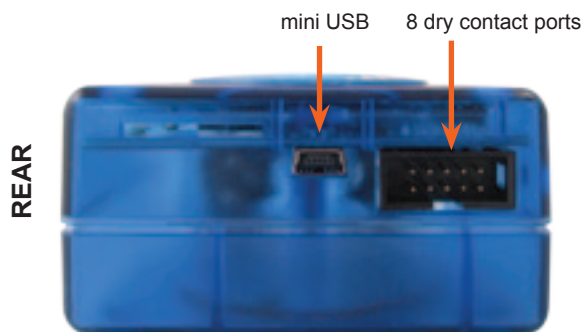




## DMX Live control and Stand Alone controller

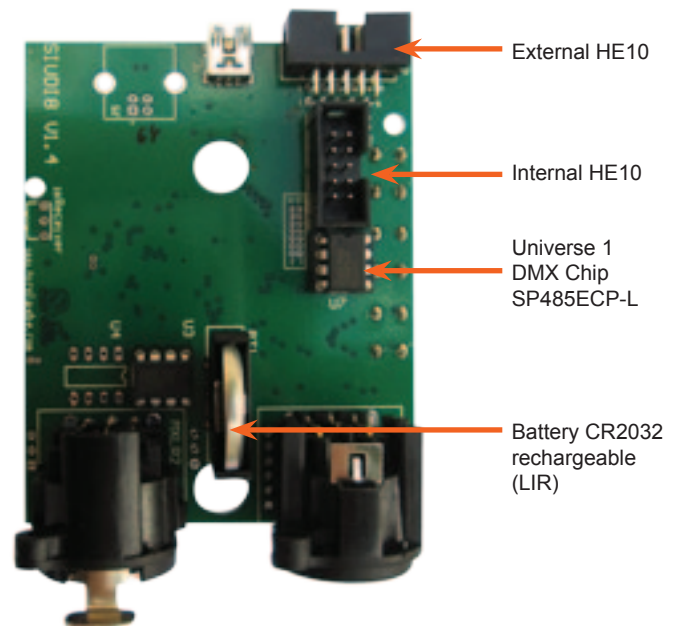
- USB connection
- Up to 2 DMX512 universes
- 128k flash memory for storing stand alone programs
- 8 dry contact trigger ports via HE10 connector
- clock & calendar triggering function
- stand alone mode with 1 zone and 255 scenes



Universe #2\*  
1 DMX2 ground  
2 DMX2 data-  
3 DMX2 data+

Universe #1  
1 DMX1 ground  
2 DMX1 data-  
3 DMX1 data+

\*not compatible with SLESA-U8



## SPECIFICATIONS

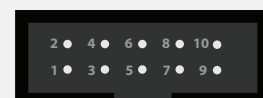
<b>Package</b>	Interface, cdrom, usb cable
<b>OS Requirement</b>	Mac OSx 10.6/10.7/10.8 - Windows XP/VISTA/SEVEN/8 32/64 bits and USB 2.0
<b>Colors</b>	Blue, Orange, Gray, Green, Marine, White, Red
<b>Connections</b>	XLR3, mini USB, 2 HE10, battery
<b>Power</b>	Power From 5V to 5.5V DC (AC/DC adapter in option, ref: POWER1_EU)
<b>Certifications</b>	EC, EMC, ROHS, ETL, UL (some are in progress)
<b>Interface</b>	79x92x43 mm 120g
<b>Package</b>	140x135x50 mm 340g
<b>Use</b>	Environement IP20 Temperature 0°C to 50°C
<b>Buttons</b>	2 buttons to change scene (previous/next) + 1 button to change dimmer

### External HE10



P1 PORT 1      P6 PORT 6  
P2 PORT 2      P7 PORT 7  
P3 PORT 3      P8 PORT 8  
P4 PORT 4      GND Ground  
P5 PORT 5

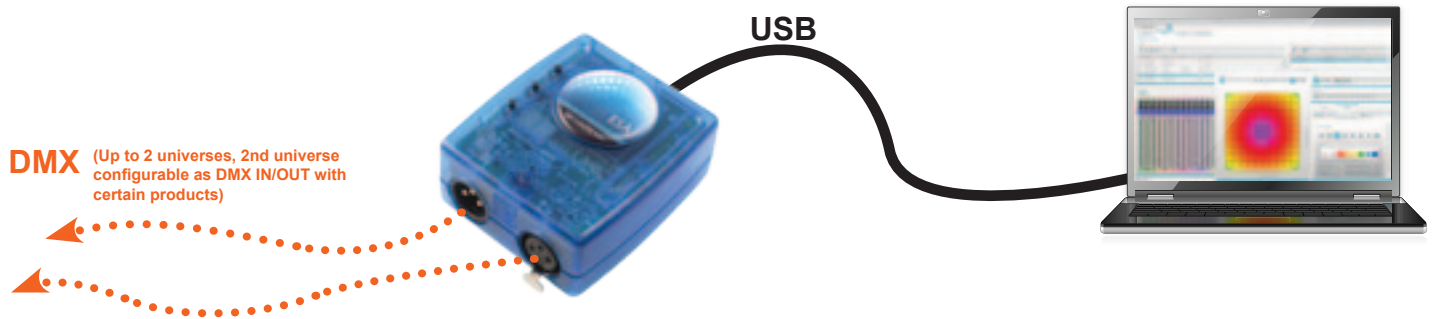
### Internal HE10



1 Ground      6 NEXT  
2 Dimmer      7 Zone  
3 DMX1+      8 LED DMX  
4 PREVIOUS    9 VUSB  
5 DMX1-      10 LED USB



## LIVE USE WITH COMPUTER

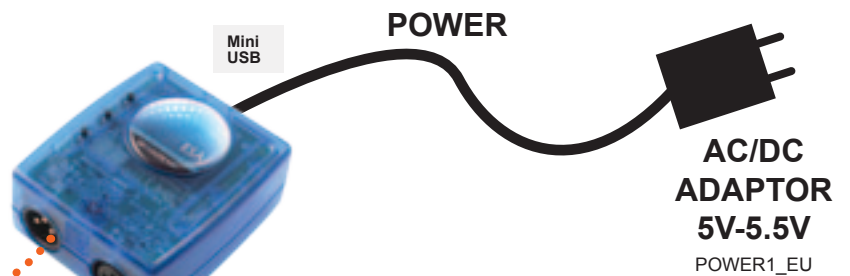
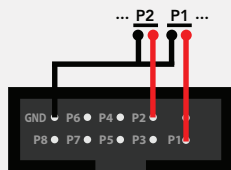


**DMX** (Up to 2 universes, 2nd universe configurable as DMX IN/OUT with certain products)

## STAND ALONE USE

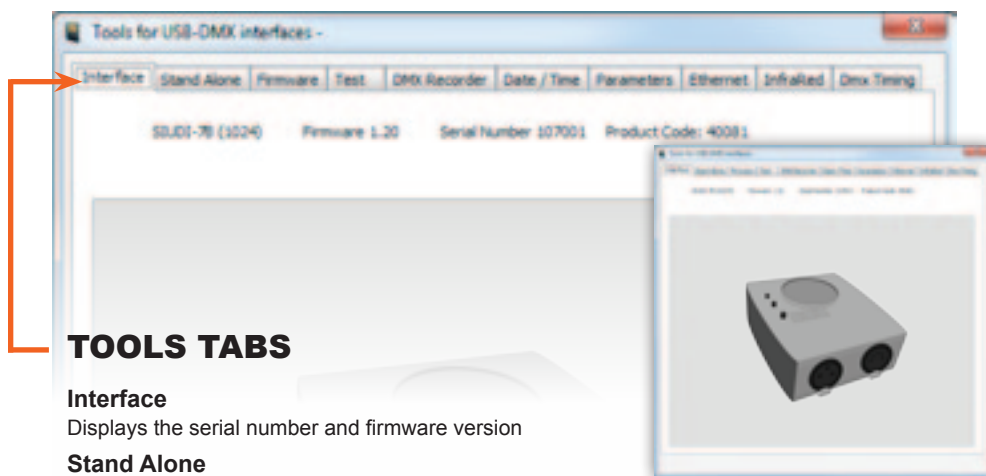
### PORTS SETUP

Connect any of the port pins with the ground pin to trigger a volt free dry contact port. Ports can be combined in binary to have up to 255 triggers.



**DMX** (Up to 2 universes)

## SOFTWARE TOOLS.EXE to set parameters



### TOOLS TABS

#### Interface

Displays the serial number and firmware version

#### Stand Alone

Set the interface to stand alone mode

#### Firmware

Write the latest firmware

#### Test

Test DMX outputs and ports

#### Date / Time

Set date, time, and location coordinates

#### Parameters

Adjust special parameters

#### Dmx Timing

Adjust DMX output signal

### Nicolaudie software

- Easy Stand Alone software\* (PC)
- ESA2 software\* (PC & Mac)
- Sunlite Suite 2 (PC, works only with SUITE2-EC versions)

\* SLESA-U8 limited to 1 universe