**FEATURES**

- LED DRIVER - DIMMABLE
- DC Input 12-24-48 Vdc - Dimmable
- Output: 1 channel – constant current:
150mA / 250mA / 350mA / 500mA
- Typical efficiency 95%
- Adjusting the brightness up to completed off
- Extended temperature range
- 100% Functional test - 5 years warranty



CODE ²⁾	Supply Voltage	Output	Channels	Dimmable
D40x20-150-D	12/24/48V DC	1 x 150mA	1	
D40x20-250-D	12/24/48V DC	1 x 250mA	1	
D40x20-350-D	12/24/48V DC	1 x 350mA	1	
D40x20-500-D	12/24/48V DC	1 x 500mA	1	

²⁾Only on demand, variant with 4 connectors.

Applications

Dimming: dimming can be achieved by using Dalcnet Led Dimmers of **DLD, DLB, DLC, DLX, DLA** (booster) series with constant voltage output (CV).

NOTE: It is possible to create a single dimming group only for each power supply and each dimmer.
(all D40x20 must be controlled uniformly)

Protections

OTP	Over temperature protection
OVP	Over voltage protection
UVP	Under voltage protection
RVP	Reverse polarity protection
IFP	Input fuse protection
SCP	Short circuit protection
OCP	Open circuit protection
CLP	Current limit protection

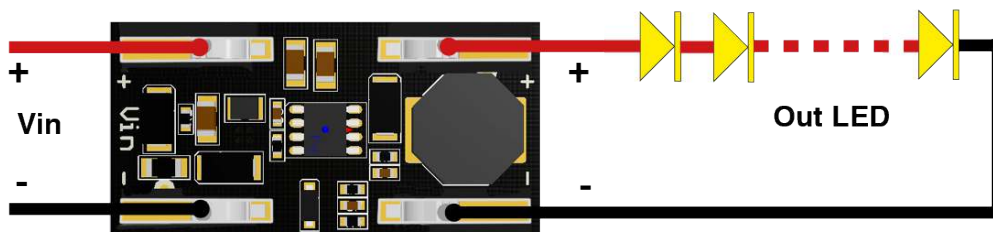
Reference Standards

EN 61347-1:2008+A1:2011+A2:2013	Lamp controlgear - Part 1: General and safety requirements
EN 61347-2-13:2014	Lamp controlgear - Part 2-13: Particular requirements for d.c. or a.c. supplied electronic controlgear for LED modules
EN 62384:2006+A1:2009	DC or AC supplied electronic control gear for LED modules - Performance requirements

Technical Specifications

	Constant Current Output			
	150mA	250mA	350mA	500mA
Supply Voltage	Min: 9 Vdc .. max: 52,8 Vdc			
Input current	max 0.15A	Max 0.25A	max 0,35A	max 0,5A
Output Voltage	min: Vin/4 max: Vin-0,9V			
Typ. output current	150 mA	250 mA	350 mA	500 mA
Nominal power @12V ¹⁾	1.5 W	3 W	4 W	6 W
Nominal power @24V ¹⁾	3.5 W	6 W	8 W	12 W
Nominal power @48V ¹⁾	7 W	12 W	16 W	24 W
Thermal shutdown	150 °C			
Typ. Efficiency	95%			
Storage temperature	min: -40 max: +60 °C			
Ambient temperature ¹⁾	min: -40 max: +60 °C			
Weight	3,5 g			
Mechanical dimensions	40x20mm, 6mm height			

¹⁾ maximum value, dependent on the ventilation conditions

Connection**Note:**

Connect the Leds exclusively in series.

Technical Notes

Installation:

- Installation and maintenance must be performed only by qualified personnel in compliance with current regulations.
- The product must be installed inside an electrical panel protected against overvoltages.
- The product must be installed in horizontal position with electronic component upwards; Other positions are not permitted. It is not permitted to bottom-up position (with electronic component down).
- Keep separated the circuits at 230V (LV) and the circuits not SELV from circuits to low voltage (SELV) and from any connection with this product. It is absolutely forbidden to connect, for any reason whatsoever, directly or indirectly, the 230V mains voltage to parts of the circuit.

Power Supply:

- For the power supply use only a SELV power supplies with limited current, short circuit protection and the power must be dimensioned correctly.
- In case of using power supply with ground terminals, all points of the protective earth (PE = Protection Earth) must be connected to a valid and certified protection earth.
- The connection cables between the power source "low voltage" and the product must be dimensioned correctly and they should be isolated from every wiring or parts at voltage not SELV. Use double insulated cables.
- Dimension the power supply for the load connected to the device. If the power supply is oversized compared with the maximum absorbed current, insert a protection against over-current between the power supply and the device.
- For the constant current output, the voltage of LED module (Vf) must be less of 5V at the voltage of power supply.

Command:

- The length of the connection cables between the power source and the product must be less than 10m; the cables must be dimensioned correctly and they should be isolated from every wiring or parts at voltage not SELV. Use double insulated shielded and twisted cables.

Outputs:

- The length of the connection cables between the product and the LED module must be less than 10m; the cables must be dimensioned correctly and they should be isolated from every wiring or parts at voltage not SELV. Is preferable to use shielded and twisted cables.