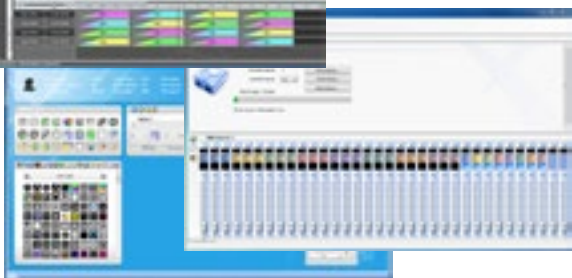
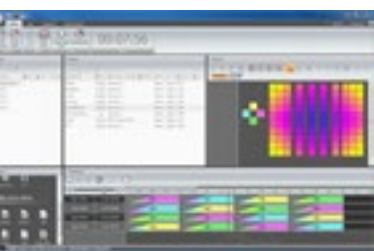


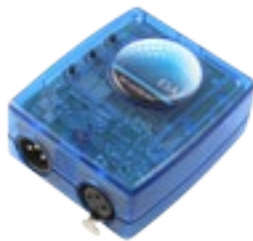
SLESA-UE7



SLESA is a communication interface between software and DMX devices. Each SLESA interface includes a stand-alone memory, that allows to store a color show for ex and to reproduce it without using a laptop.



SLESA è un' interfaccia di comunicazione tra il software e dispositivi DMX. Ogni interfaccia SLESA include una memoria stand-alone consentendo di memorizzare uno show e riprodurlo senza necessità di avere con sé un computer.



SLESA-U8



SLESA-U9

CODE	Output	Supply Voltage	Stand-Alone Memory	Porta
SLESA-UE7	2x512 DMX Channels	5-6V DC	Micro SD Memory	USB mini - RJ45
SLESA-U8	512 DMX Channels	5-6V DC	128k	USB mini
SLESA-U9	256 DMX Channels	5-6V DC	20k	USB mini

POWER SUPPLY NOT INCLUDED - ALIMENTATORE NON INCLUSO

Software available for Android and Apple Devices.

